



AVC-BNN41AVT AI

NDAA COMPLIANT | CE | FC

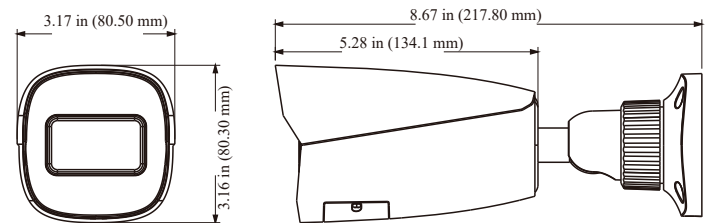
4MP IR WATER-PROOF BULLET NETWORK CAMERA

OVERVIEW

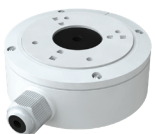
- 4MP (2592 x 1520) @ 30fps
- Max. Resolution: (2592 x 1520)
- H.265+ / H.265 / H.264+ / H.264 / MJPEG Coding
- ICR Auto Switch, True Day / Night vision
- 98ft to 164ft (30-50m) IR Night View Distance
- 3D DNR, True WDR, HLC, BLC and ROI encoding
- Support Image Distortion Correction
- 1 CH Audio Input
- Built-in micro SD card slot with video and still image capture function (up to 256GB)
- DC12V / PoE Power Supply
- IP 67 Ingress Protection
- Support Triple Streams
- Support Remote Monitoring by Smart Phones & Tablet PCs with iOS and Android OS
- Intelligent Analytics
- NDAA Compliant
- UL-listed

DIMENSIONS

Unit : inch(mm)



OPTIONAL ACCESSORIES



AVM-BDMT-W-TL1
JUNCTION BOX



AVM-DPMT-W-TL1
CEILING MOUNT BRACKET



AVM-P-CMT
CORNER MOUNT BRACKET



AVM-P-PMT
POLE MOUNT BRACKET

SPECIFICATIONS

CAMERA																
Image Sensor	1/3" Progressive Scan CMOS															
Image Size	2592 x 1520															
Shutter Speed	1/2s to 1/100,000s															
Iris Type	DC Iris															
Min. Illumination	Color: 0.005 lux @ F1.6(AGC ON); BW: 0 lux with IR															
IR Distance	Up to 164ft															
Lens	Motorized 2.8 - 12 mm @ F1.3 Horizontal FoV: 100.0° ~ 28.9° Vertical FoV: 54.5° ~ 16.7° Diagonal FoV: 104.8° ~ 33.1°															
Focus	Motorized															
Len Mount	φ14															
Day and Night	ICR															
Wide Dynamic Range	120dB															
Digital NR	3D DNR															
Backlight Compensation (BLC)	Yes															
Highlight Compensation (HLC)	Yes															
Defog	Yes															
Angle Adjustment	Pan: 0°~360°; Tilt:0°~90°; Rotation: 0°~360°															
VIDEO IMAGE																
Video Compression	Main stream: H.265+ / H.265 / H.264+ / H.264 Sub/third stream: H.265+ / H.265 / H.264+ / H.264 / MJPEG															
H.264 Compression Standard	Baseline Profile / Main Profile / High Profile															
Resolution	4MP (2592 x 1520), 2K (2560 x 1440), 3MP (2304 x 1296), 1080P (1920 x 1080), 720P (1280 x 720), D1, 480 x 240, VGA (640 x 480)															
Main Stream	60Hz: 4MP/2K/3MP/1080P/720P (1~30fps); 50Hz: 4MP/2K/3MP/1080P/720P (1~25fps); HFR mode: 1080P/720P (60Hz: 1~60fps / 50Hz: 1~50fps)															
Sub Stream	60Hz: 720P/D1/CIF/VGA (1~30fps); 50Hz: 720P/D1/CIF/VGA (1~25fps)															
Third Stream	D1/CIF/480x240 (60Hz : 1 ~ 30fps; 50Hz: 1~25fps)															
Video Bit Rate	64 Kbps ~ 8 Mbps (CBR / VBR Adjustable)															
Image Settings	ROI, Saturation, Brightness, Hue, Contrast, Wide Dynamic, Sharpness, Image Mirror, Image Flip, NR, etc. adjustable through client software or web browser															
ROI	Each ROI to be configured separately															
NETWORK / INTERFACE																
Network	1 x RJ45 10M / 100M Self-Adaptive Ethernet port															
Network Protocol	UDP, IPv4, IPv6, DHCP, NTP, RTSP, RTP, RTMP, RTCP, PPPoE, DDNS, SMTP, FTP, SNMP, HTTP, HTTP POST, 802.1x, UPnP, HTTPS, QoS															
Interface Protocol	ONVIF (Profile S, G, T, M)															
Web Browser	IE 11 (Plug-in required) / Google Chrome 89.0+ / Edge 89.0+ / Firefox 87.0+ / Safari 14.0+															
Online Connection	Support simultaneous monitoring for up to 10 users; Support multi-stream real time transmission															
Security	Video encryption, firmware encryption, HTTPS encryption, configuration encryption, illegal login lock, IP address filtering, 802.1x authentication, basic and digest authentication for HTTP/RTSP x authentication,															
Storage	Micro SD/SDHC/SDXC Slot (up to 256GB) with video and still image capture function															
Video Output	No															
Audio	1CH audio input															
Audio Compression	G711A / U															
Alarm	N/A															
Hardware Reset	Yes															
DORI DISTANCE																
	<table border="1"> <thead> <tr> <th>Lens</th> <th>Detect</th> <th>Observe</th> <th>Recognize</th> <th>Identify</th> </tr> </thead> <tbody> <tr> <td>2.8~12mm(W)</td> <td>193.27ft (58.91m)</td> <td>77.29ft (23.56m)</td> <td>38.64ft (11.78m)</td> <td>19.32ft (5.89m)</td> </tr> <tr> <td>2.8~12mm(T)</td> <td>675.82ft (205.99m)</td> <td>270.34ft (82.40m)</td> <td>135.17ft (41.20m)</td> <td>67.58ft (20.60m)</td> </tr> </tbody> </table>	Lens	Detect	Observe	Recognize	Identify	2.8~12mm(W)	193.27ft (58.91m)	77.29ft (23.56m)	38.64ft (11.78m)	19.32ft (5.89m)	2.8~12mm(T)	675.82ft (205.99m)	270.34ft (82.40m)	135.17ft (41.20m)	67.58ft (20.60m)
Lens	Detect	Observe	Recognize	Identify												
2.8~12mm(W)	193.27ft (58.91m)	77.29ft (23.56m)	38.64ft (11.78m)	19.32ft (5.89m)												
2.8~12mm(T)	675.82ft (205.99m)	270.34ft (82.40m)	135.17ft (41.20m)	67.58ft (20.60m)												
FUNCTION																
Remote Monitoring	Web Browser Interface, Mobile App, AVYCON CVMS 2.0															
Smart Alarm	Motion detection, SD card error, SD card full, IP address conflict, cable disconnection															
Smart Analytics	Line crossing, region intrusion/entrance/exiting, loitering detection, illegal parking detection, abandoned/missing object detection, Target counting by line/intrusion area/heat map, exception detection, face detection and face capture															
Video Metadata	Simultaneously captures human body, motor vehicle and non-motor vehicle and extracts 13 human features, 5 motor vehicle features and 1 non-motor vehicle feature															
General Function	Watermark, IP address filtering, video mask, heartbeat, illegal login lock, corridor pattern															
GENERAL																
Power Supply	DC12V / PoE (IEEE 802.3af)															
Power Consumption	< 9.5W															
Storage Condition	-22°F ~ 140°F (-30°C ~ 60°C) Humidity: less than 95% (non-condensing)															
Operating Condition	-22°F ~ 149°F (-30°C ~ 65°C) Humidity: less than 95% (non-condensing)															
Dimensions (in)	8.57in (217.8mm) × 3.17in (80.5 mm) × 3.16in (80.3mm)															
Weight (lb)	Approx. 1.45 lbs															
Ingress Protection	IP 67															
Certificate	CE, FCC, UL															
Installation	Ceiling mounting; Wall mounting															
Environmental Protection	Complies with Directive EU RoHS, WEEE(2012/19/EU), directive 94/62/EC and REACH (EC1907/2006)															